



The Madison Dream House

3 or 4 Bdr / 2.5 or 3.5 Baths / 2-Car Garage

1st Floor: 1,861 sq. ft.
2nd Floor: as follows
593 sq. ft. 3 bedroom
862 sq. ft. 4 bedroom

Exterior Dimensions

40'-0" Wide
64'-0" Deep



THE MADISON DREAM HOUSE

FRONT ELEVATION : 3-BEDROOM VERSION

3-BR : 2454 SQ. FT. ENTRY & UPPER + 568 SQ. FT. OPT. FINISHED BASEMENT

4-BR : 2723 SQ. FT. ENTRY & UPPER + 568 SQ. FT. OPT. FINISHED BASEMENT



Some optional features may be shown or discussed. See JEMM Construction, LLC sales associate for details and standard features. Floor plans are subject to change. This rendering and floor plans are for illustrative purposes only and are not intended to be a part of any purchase agreement or construction contract. In the interest of continued product improvement and the challenge of material availability, builder reserves the right to modify plans, specifications, and standard features without notice. This home plan is the exclusive copyright of JEMM Construction, LLC or the plan designer. All rights reserved. Reproduction of this plan, either in whole or in part, including any form of copying or derivative works therefrom is strictly prohibited.

JEMM Construction, LLC | 200 Blackbrook Road Painesville, OH 44077
Office: (440)358-0008 | Email: jemmsalesteam@jemmconstruction.net
www.jemmconstruction.net



The Madison Dream House

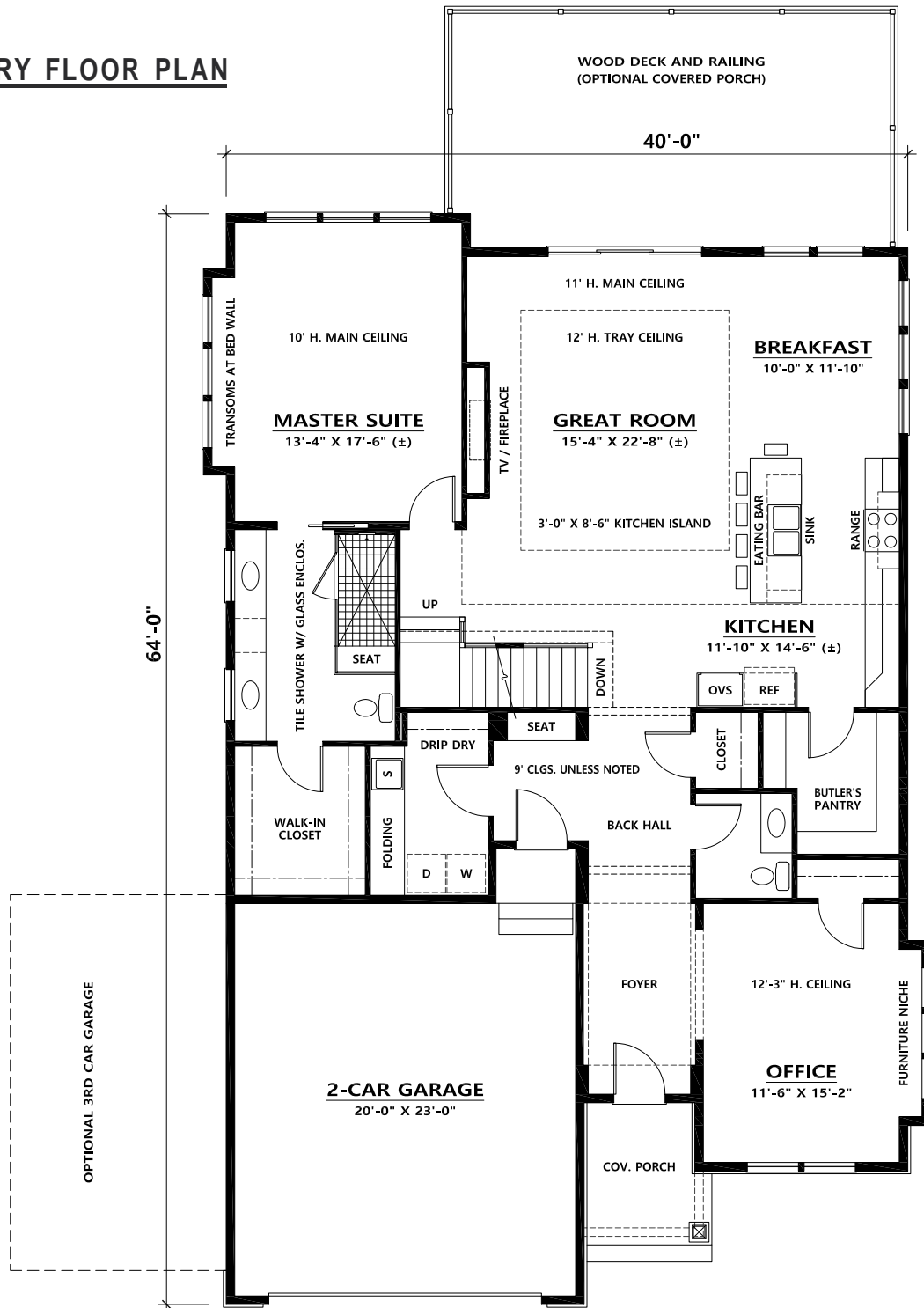
3 or 4 Bdr / 2.5 or 3.5 Baths / 2-Car Garage

1st Floor: 1,861 sq. ft.
 2nd Floor: as follows
 593 sq. ft. 3 bedroom
 862 sq. ft. 4 bedroom

Exterior Dimensions

40'-0" Wide
 64'-0" Deep

ENTRY FLOOR PLAN



Some optional features may be shown or discussed. See JEMM Construction, LLC sales associate for details and standard features. Floor plans are subject to change. This rendering and floor plans are for illustrative purposes only and are not intended to be a part of any purchase agreement or construction contract. In the interest of continued product improvement and the challenge of material availability, builder reserves the right to modify plans, specifications, and standard features without notice. This home plan is the exclusive copyright of JEMM Construction, LLC or the plan designer. All rights reserved. Reproduction of this plan, either in whole or in part, including any form of copying or derivative works therefrom is strictly prohibited.

JEMM Construction, LLC | 200 Blackbrook Road Painesville, OH 44077
 Office: (440)358-0008 | Email: jemmsalesteam@jemmconstruction.net
www.jemmconstruction.net



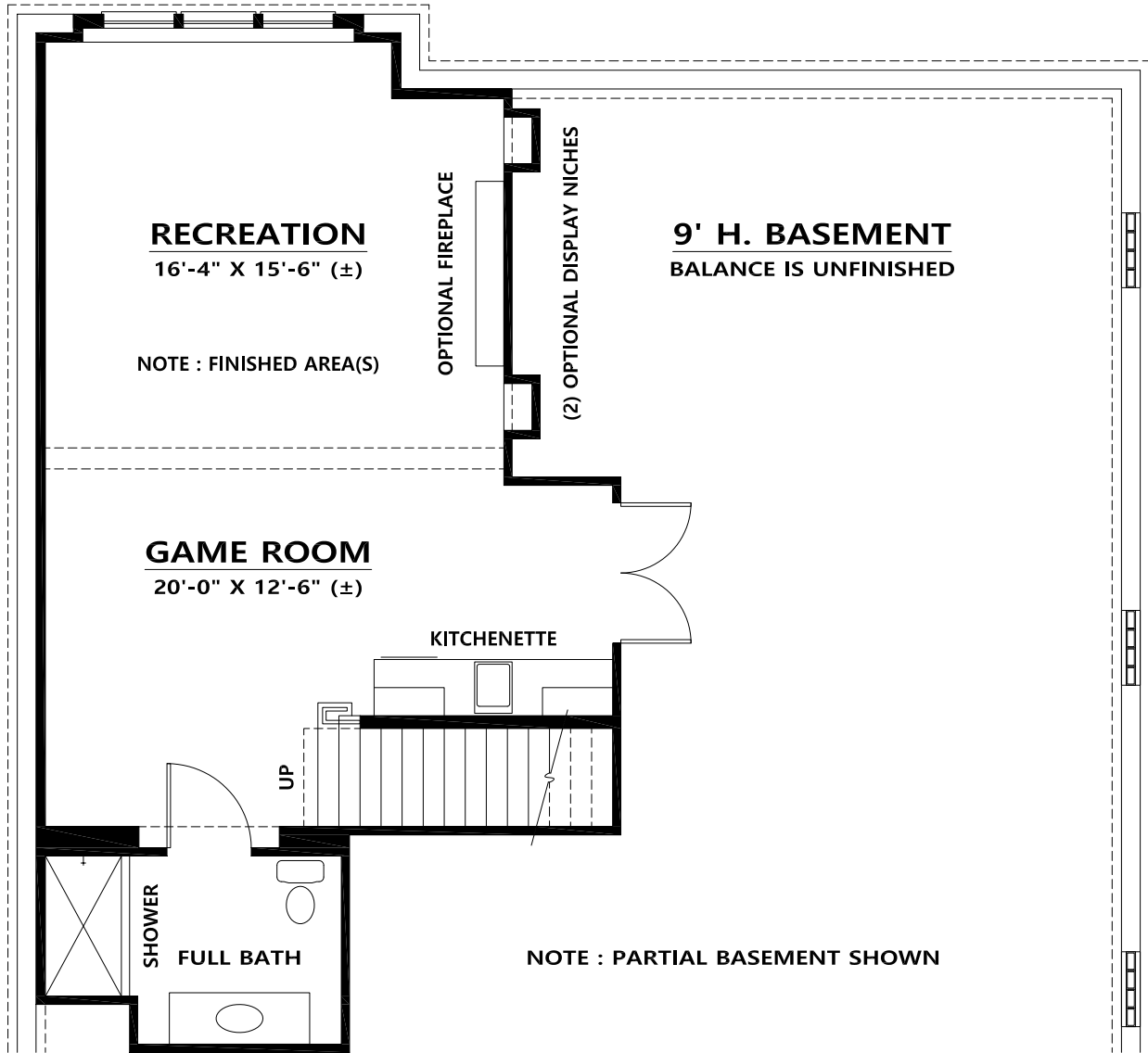
The Madison Dream House

3 or 4 Bdr / 2.5 or 3.5 Baths / 2-Car Garage

1st Floor: 1,861 sq. ft.
 2nd Floor: as follows
 593 sq. ft. 3 bedroom
 862 sq. ft. 4 bedroom

Exterior Dimensions

40'-0" Wide
 64'-0" Deep



OPTIONAL FINISHED LOWER LEVEL PLAN : 568 SQ. FT.

Some optional features may be shown or discussed. See JEMM Construction, LLC sales associate for details and standard features. Floor plans are subject to change. This rendering and floor plans are for illustrative purposes only and are not intended to be a part of any purchase agreement or construction contract. In the interest of continued product improvement and the challenge of material availability, builder reserves the right to modify plans, specifications, and standard features without notice. This home plan is the exclusive copyright of JEMM Construction, LLC or the plan designer. All rights reserved. Reproduction of this plan, either in whole or in part, including any form of copying or derivative works therefrom is strictly prohibited.

JEMM Construction, LLC | 200 Blackbrook Road Painesville, OH 44077
 Office: (440)358-0008 | Email: jemmsalesteam@jemmconstruction.net
 www.jemmconstruction.net



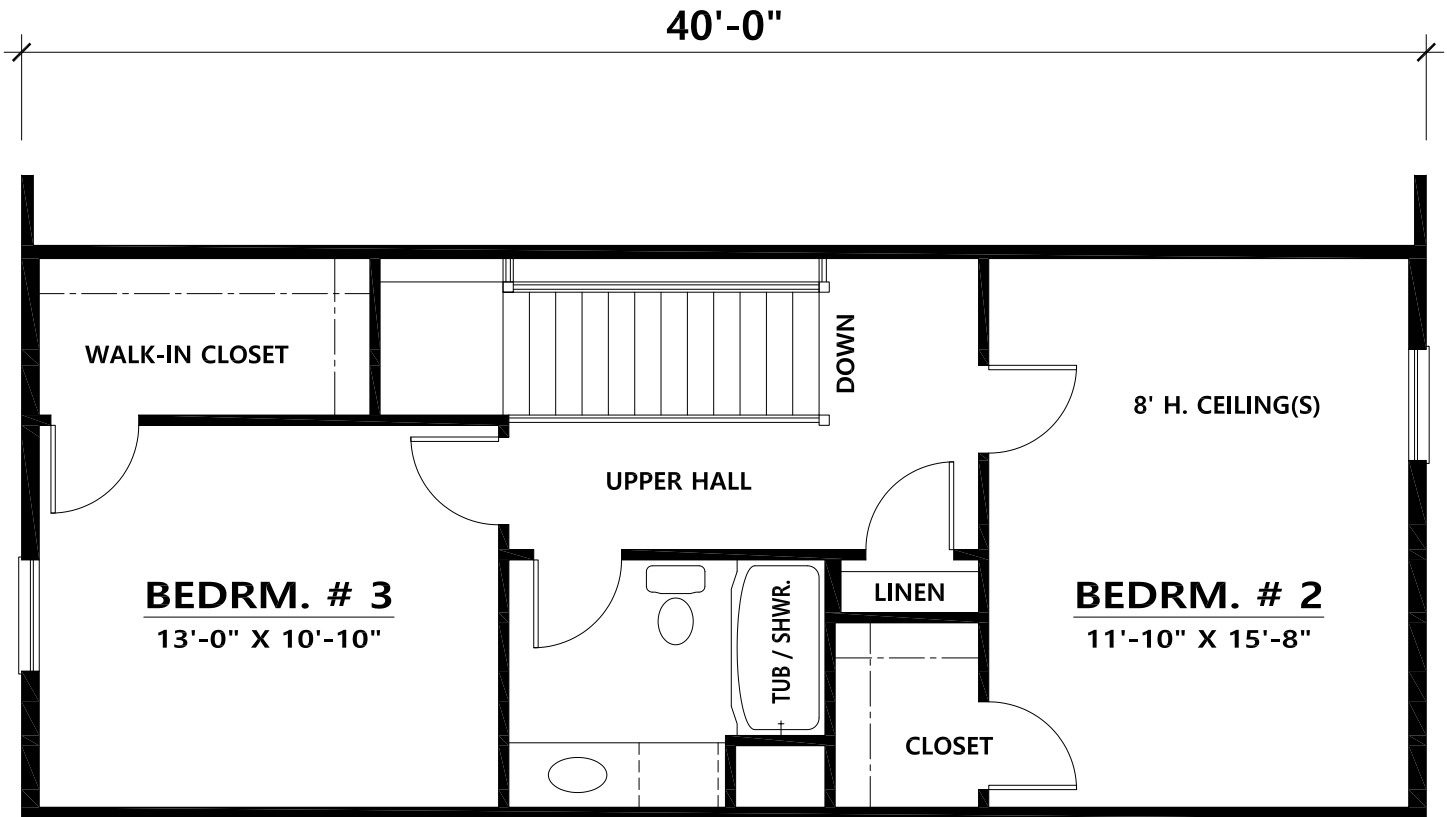
The Madison Dream House

3 or 4 Bdr / 2.5 or 3.5 Baths / 2-Car Garage

1st Floor: 1,861 sq. ft.
2nd Floor: as follows
593 sq. ft. 3 bedroom
862 sq. ft. 4 bedroom

Exterior Dimensions

40'-0" Wide
64'-0" Deep



UPPER FLOOR PLAN : 3 BEDROOM VERSION

Some optional features may be shown or discussed. See JEMM Construction, LLC sales associate for details and standard features. Floor plans are subject to change. This rendering and floor plans are for illustrative purposes only and are not intended to be a part of any purchase agreement or construction contract. In the interest of continued product improvement and the challenge of material availability, builder reserves the right to modify plans, specifications, and standard features without notice. This home plan is the exclusive copyright of JEMM Construction, LLC or the plan designer. All rights reserved. Reproduction of this plan, either in whole or in part, including any form of copying or derivative works therefrom is strictly prohibited.

JEMM Construction, LLC | 200 Blackbrook Road Painesville, OH 44077
Office: (440)358-0008 | Email: jemmsalesteam@jemmconstruction.net
www.jemmconstruction.net



The Madison Dream House

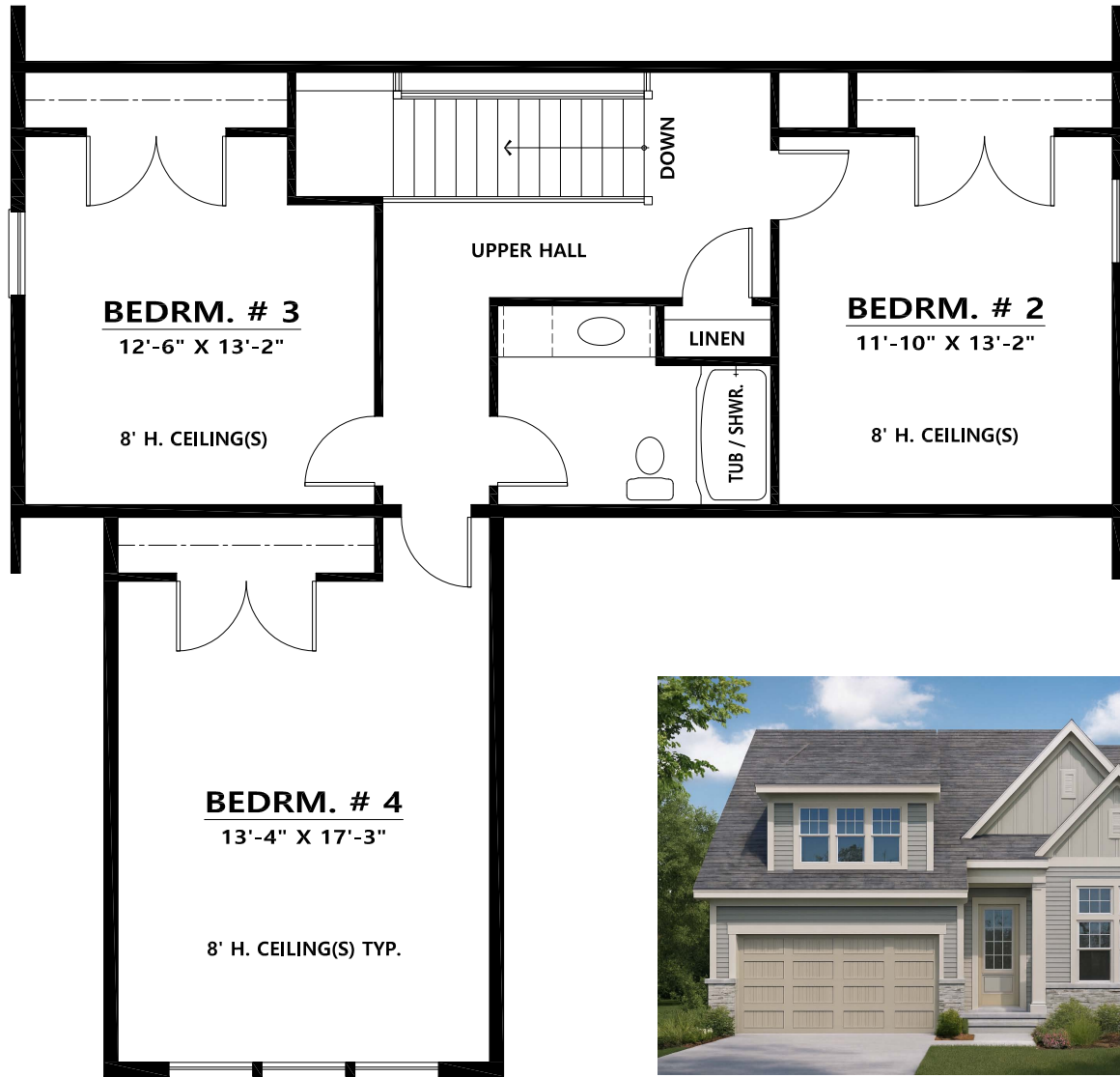
3 or 4 Bdr / 2.5 or 3.5 Baths / 2-Car Garage

1st Floor: 1,861 sq. ft.
 2nd Floor: as follows
 593 sq. ft. 3 bedroom
 862 sq. ft. 4 bedroom

Exterior Dimensions

40'-0" Wide
 64'-0" Deep

40'-0" : OVERALL HOUSE WIDTH



UPPER FLOOR PLAN
 4 BEDROOM VERSION



FRONT ELEVATION
 4 BEDROOM VERSION

Some optional features may be shown or discussed. See JEMM Construction, LLC sales associate for details and standard features. Floor plans are subject to change. This rendering and floor plans are for illustrative purposes only and are not intended to be a part of any purchase agreement or construction contract. In the interest of continued product improvement and the challenge of material availability, builder reserves the right to modify plans, specifications, and standard features without notice. This home plan is the exclusive copyright of JEMM Construction, LLC or the plan designer. All rights reserved. Reproduction of this plan, either in whole or in part, including any form of copying or derivative works therefrom is strictly prohibited.

JEMM Construction, LLC | 200 Blackbrook Road Painesville, OH 44077
 Office: (440)358-0008 | Email: jemmsalesteam@jemmconstruction.net
www.jemmconstruction.net