



**THE MILAN II
WITH OFFICE**
4 Bedrms / 2 1/2 Baths
3-Car Side Load Garage

First Floor:
1937 sq. ft.
2nd Floor:
1063 sq. ft.

Exterior Dimensions
59'-8" Wide
65'-8" Deep



FOUR BEDROOM RESIDENCE : 3000 SQ. FT. TOTAL

MILAN II W/ OFFICE : SIDE LOAD GARAGE OPTION

NOTE : SHOWN WITH ALTERNATE FOYER STAIR PLAN OPTION



Some optional features may be shown or discussed. See JEMM Construction, LLC sales associate for details and standard features. Floor plans are subject to change. This rendering and floor plans are for illustrative purposes only and are not intended to be a part of any purchase agreement or construction contract. In the interest of continued product improvement and the challenge of material availability, builder reserves the right to modify plans, specifications, and standard features without notice. This home plan is the exclusive copyright of JEMM Construction, LLC or the plan designer. All rights reserved. Reproduction of this plan, either in whole or in part, including any form of copying or derivative works therefrom is strictly prohibited.

JEMM Construction, LLC | 200 Blackbrook Road Painesville, OH 44077
Office: (440)358-0008 | Email: jemmsalesteam@jemmconstruction.net
www.jemmconstruction.net

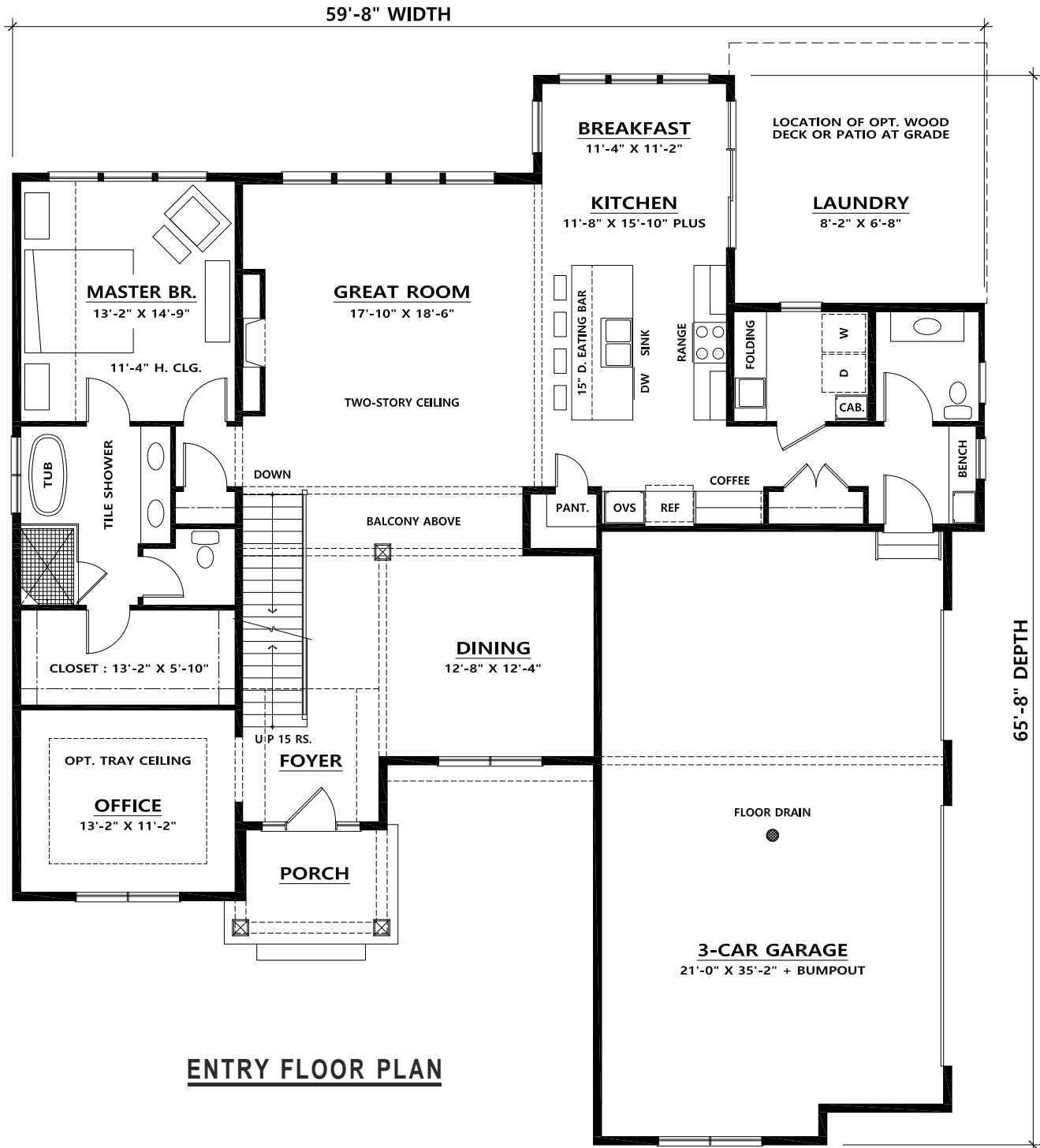


THE MILAN II WITH OFFICE

4 Bedrms / 2 1/2 Baths
3-Car Side Load Garage

First Floor:
1937 sq. ft.
2nd Floor:
1063 sq. ft.

Exterior Dimensions
59'-8" Wide
65'-8" Deep



ENTRY FLOOR PLAN

Some optional features may be shown or discussed. See JEMM Construction, LLC sales associate for details and standard features. Floor plans are subject to change. This rendering and floor plans are for illustrative purposes only and are not intended to be a part of any purchase agreement or construction contract. In the interest of continued product improvement and the challenge of material availability, builder reserves the right to modify plans, specifications, and standard features without notice. This home plan is the exclusive copyright of JEMM Construction, LLC or the plan designer. All rights reserved. Reproduction of this plan, either in whole or in part, including any form of copying or derivative works therefrom is strictly prohibited.

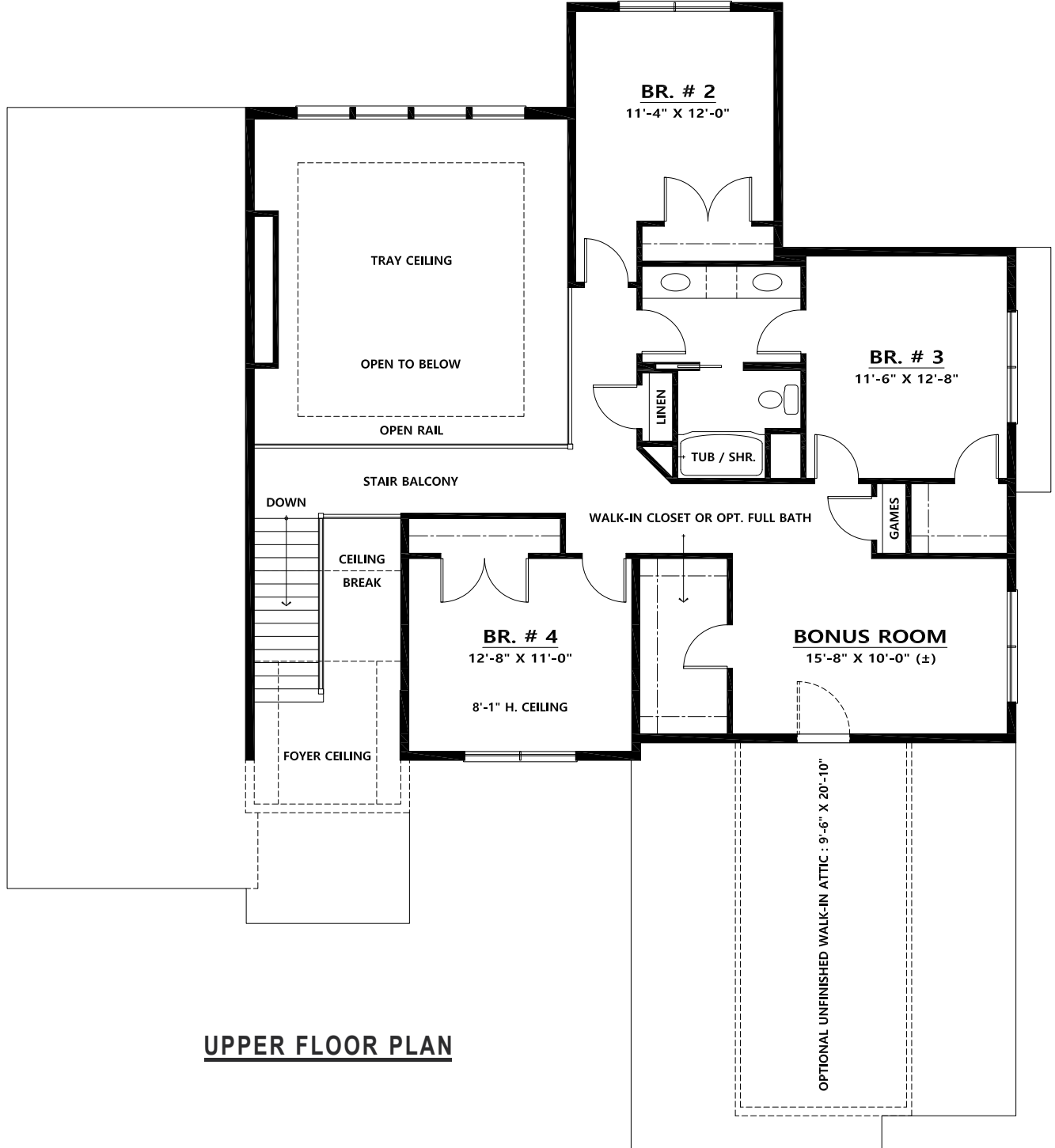
JEMM Construction, LLC | 200 Blackbrook Road Painesville, OH 44077
Office: (440)358-0008 | Email: jemmsalesteam@jemmconstruction.net
www.jemmconstruction.net



**THE MILAN II
WITH OFFICE**
4 Bedrms / 2 1/2 Baths
3-Car Side Load Garage

First Floor:
1937 sq. ft.
2nd Floor:
1063 sq. ft.

Exterior Dimensions
59'-8" Wide
65'-8" Deep



UPPER FLOOR PLAN

Some optional features may be shown or discussed. See JEMM Construction, LLC sales associate for details and standard features. Floor plans are subject to change. This rendering and floor plans are for illustrative purposes only and are not intended to be a part of any purchase agreement or construction contract. In the interest of continued product improvement and the challenge of material availability, builder reserves the right to modify plans, specifications, and standard features without notice. This home plan is the exclusive copyright of JEMM Construction, LLC or the plan designer. All rights reserved. Reproduction of this plan, either in whole or in part, including any form of copying or derivative works therefrom is strictly prohibited.

JEMM Construction, LLC | 200 Blackbrook Road Painesville, OH 44077
Office: (440)358-0008 | Email: jemmsalesteam@jemmconstruction.net
www.jemmconstruction.net