



Tudor Cottage

3 Bedroom / 2 Bath
Ranch Plan / 2-Car Garage

First Floor:
1,740 sq. ft.

Exterior Dimensions
43'-0" Wide
58'-4" Deep



FRONT ELEVATION



Some optional features may be shown or discussed. See JEMM Construction, LLC sales associate for details and standard features. Floor plans are subject to change. This rendering and floor plans are for illustrative purposes only and are not intended to be a part of any purchase agreement or construction contract. In the interest of continued product improvement and the challenge of material availability, builder reserves the right to modify plans, specifications, and standard features without notice. This home plan is the exclusive copyright of JEMM Construction, LLC or the plan designer. All rights reserved. Reproduction of this plan, either in whole or in part, including any form of copying or derivative works therefrom is strictly prohibited.

JEMM Construction, LLC | 200 Blackbrook Road Painesville, OH 44077
Office: (440)358-0008 | Email: jemmsalesteam@jemmconstruction.net
www.jemmconstruction.net

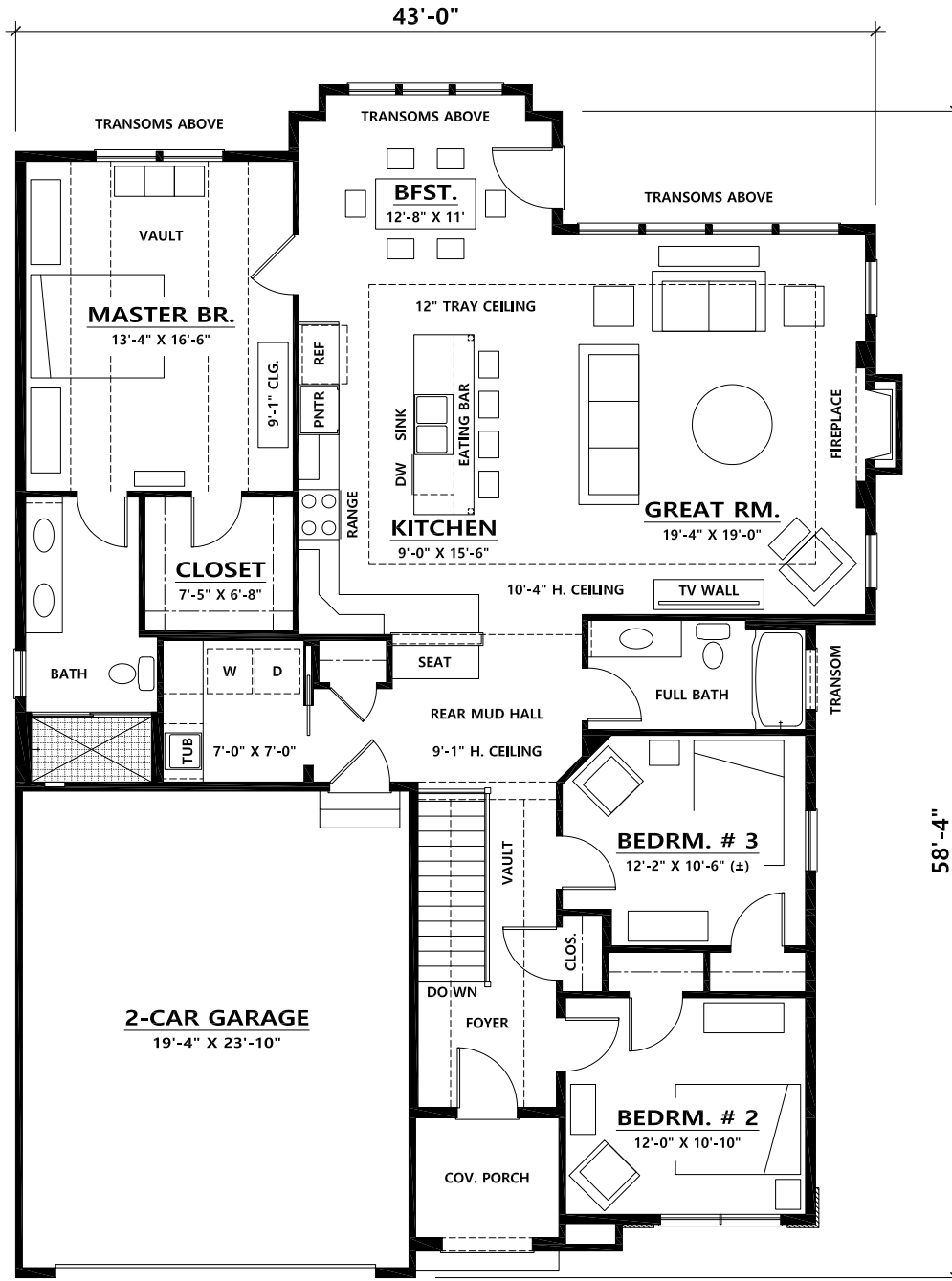


Tudor Cottage

3 Bedroom / 2 Bath
Ranch Plan / 2-Car Garage

First Floor:
1,740 sq. ft.

Exterior Dimensions
43'-0" Wide
58'-4" Deep



FLOOR PLAN

Some optional features may be shown or discussed. See JEMM Construction, LLC sales associate for details and standard features. Floor plans are subject to change. This rendering and floor plans are for illustrative purposes only and are not intended to be a part of any purchase agreement or construction contract. In the interest of continued product improvement and the challenge of material availability, builder reserves the right to modify plans, specifications, and standard features without notice. This home plan is the exclusive copyright of JEMM Construction, LLC or the plan designer. All rights reserved. Reproduction of this plan, either in whole or in part, including any form of copying or derivative works therefrom is strictly prohibited.

JEMM Construction, LLC | 200 Blackbrook Road Painesville, OH 44077
Office: (440)358-0008 | Email: jemmsalesteam@jemmconstruction.net
www.jemmconstruction.net