

the Stoneridge Milan



Features

- 2,822 Square Feet
- 9' Basement
- 9 Foot 1st Floor
- 8 Foot 2nd Floor
- 4 Bedrooms
- 2 and a Half Bathrooms
- 3 Car Garage
- Spacious Kitchen with Island
- Dining Room with Custom Ceiling Detail
- Two-Story Great Room with Gas Fireplace
- 1st Floor Laundry Room with Sink
- 1st Floor Bedroom with Vaulted Ceiling
- Glamour Master Bathroom with Walk-in-Closet

All JEMM Construction floor plans are fully customizable to fit your needs. Please contact us at (440) 358-0008 to learn more about this great plan.



On The Spot!

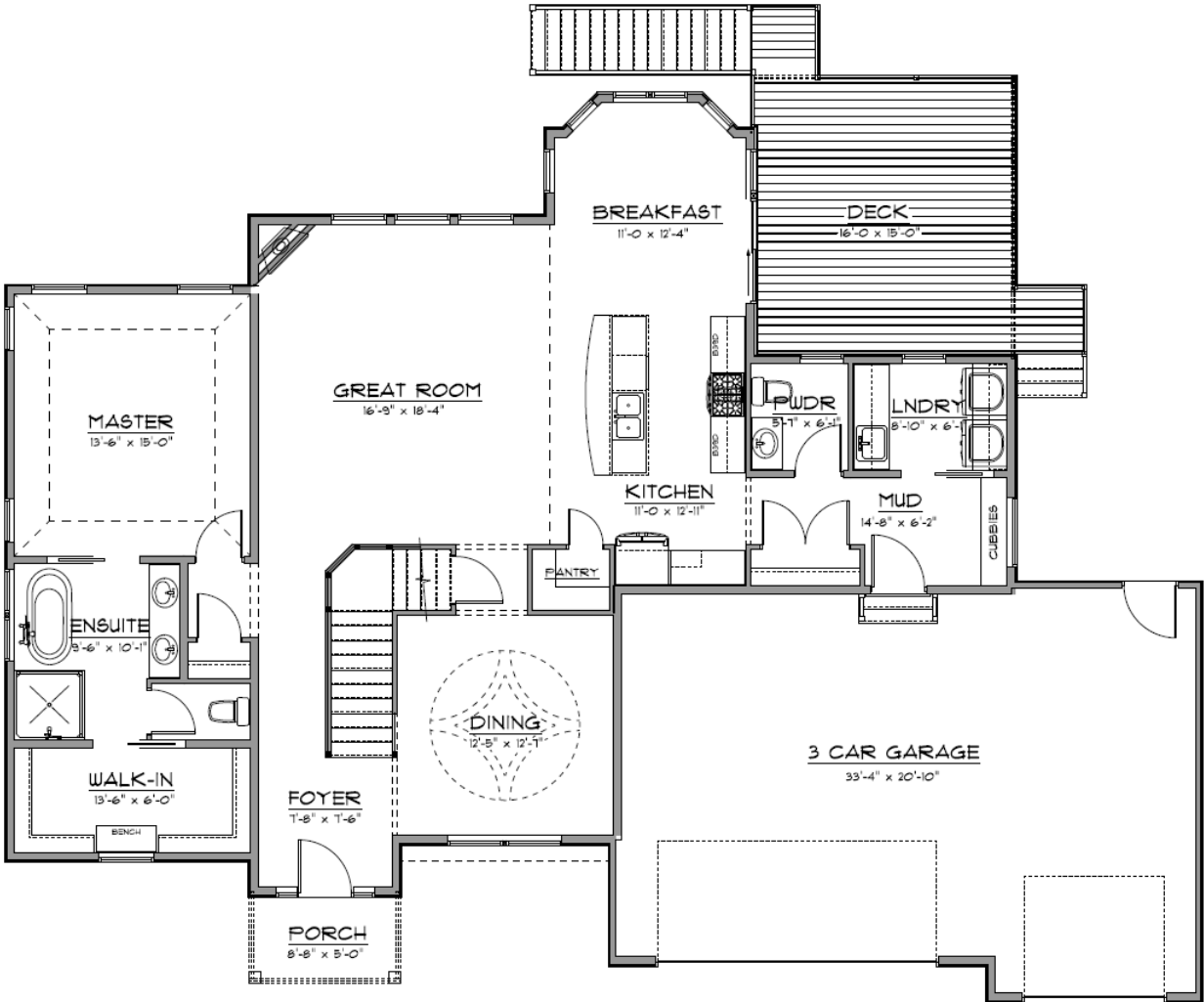


(440) 358-0008

www.jemmconstruction.net

the Stoneridge Milan

Entry Level Plan
1,703 SF



On The Spot!

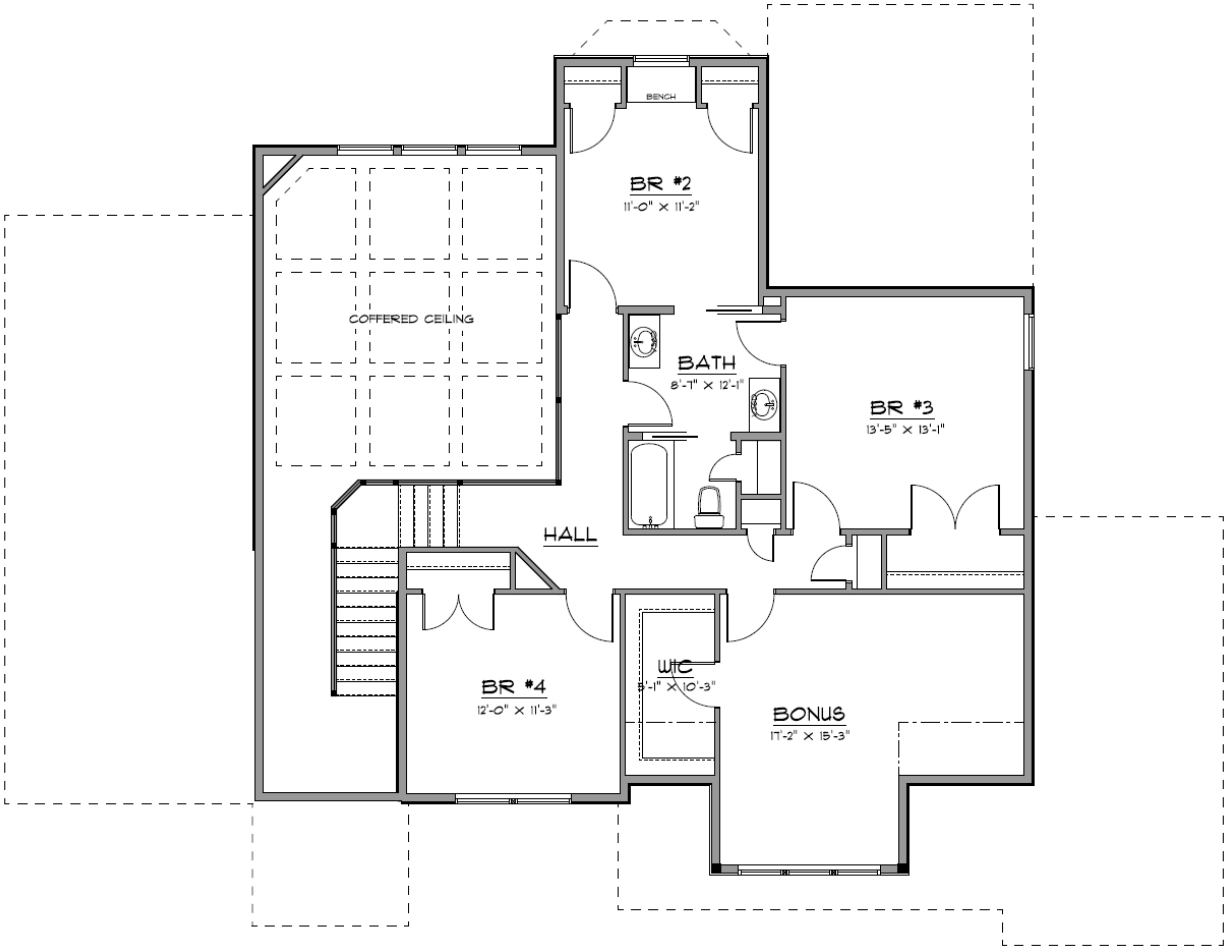


(440) 358-0008

www.jemmconstruction.net

the Stoneridge Milan

Upper Level Plan
1,119 SF



On The Spot!



(440) 358-0008

www.jemmconstruction.net